

# FACULTY OF HOSPITALITY



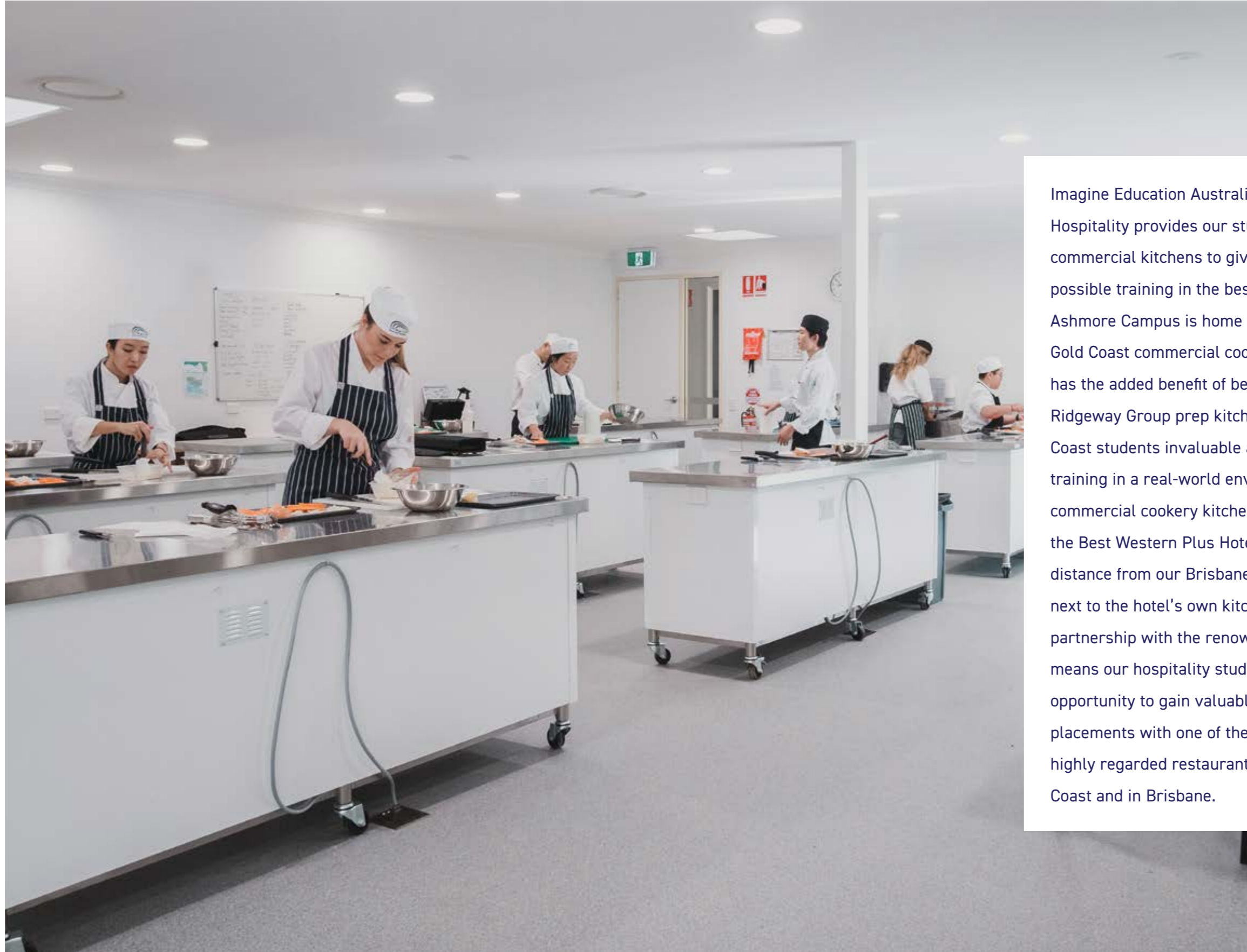
---

**CAMPUS:** Ashmore Campus, Main Campus, Brisbane Campus,  
Woolloongabba

---

**COURSES:** SIT30816 Certificate III in Commercial Cookery  
SIT40516 Certificate IV in Commercial Cookery  
SIT50416 Diploma of Hospitality Management  
(Commercial Cookery) (upgrade)  
SIT50416 Diploma of Hospitality Management  
SIT60316 Advanced Diploma of Hospitality Management

# ABOUT OUR FACULTY OF HOSPITALITY



Imagine Education Australia's Faculty of Hospitality provides our students with large commercial kitchens to give our students the best possible training in the best possible facilities. Our Ashmore Campus is home to our state-of-the-art Gold Coast commercial cookery kitchen, which has the added benefit of being located next to the Ridgeway Group prep kitchen, giving our Gold Coast students invaluable access and additional training in a real-world environment. Our Brisbane commercial cookery kitchen is located inside the Best Western Plus Hotel Diana, just a short distance from our Brisbane Campus, and right next to the hotel's own kitchen. Our enviable partnership with the renowned Ridgeway Group means our hospitality students have the unique opportunity to gain valuable work experience and placements with one of the Ridgeway Group's highly regarded restaurants situated on the Gold Coast and in Brisbane.

*little truffle*  
dining room & bar



Imagine Education Australia is proud of our partnership with Ridgeway Group. This partnership gives our hospitality students the opportunity to gain valuable work experience and placements with one of Ridgeway Group's five highly regarded restaurants situated on the Gold Coast. Owner, Daniel Ridgeway, is one of the Gold Coast's most celebrated chefs and restaurateurs and this partnership means our students are taught by the best.

## PROFESSIONAL PARTNERSHIPS

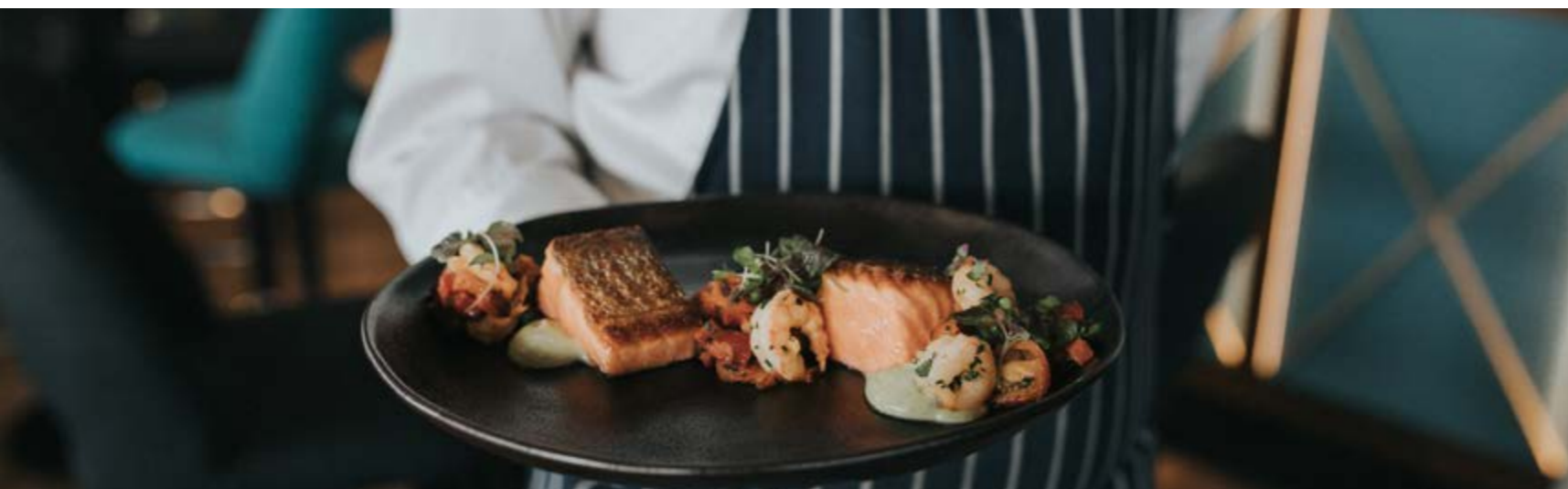
## RIDGEWAY GROUP.



# LIVE TRAINING ENVIRONMENT



STATE-OF-THE-ART COMMERCIAL COOKERY KITCHENS AT BOTH OUR BRISBANE AND GOLD COAST CAMPUSES



ENVIABLE PARTNERSHIP WITH THE RENOWNED RIDGEWAY GROUP GIVING OUR STUDENTS EXPERIENCE AT THEIR QUALITY RESTAURANTS



HIGHLY SKILLED TRAINERS WHO ARE DEDICATED TO OUR STUDENTS' SUCCESS

# SIT30816 CERTIFICATE III IN COMMERCIAL COOKERY



<b>COURSE CODE:</b>	SIT30816
<b>CRICOS CODE:</b>	091749A
<b>COURSE LENGTH:</b>	40 weeks
<b>CAREER OUTCOMES:</b>	This qualification provides a pathway to work as a commercial cook in organisations such as restaurants, hotels, clubs, pubs, cafes, and coffee shops.
<b>ARTICULATION PATHWAY:</b>	Certificate IV in Commercial Cookery
<b>CAMPUS:</b>	Ashmore Campus, Main Campus, Brisbane Campus, Woolloongabba

## OVERVIEW

When you choose Imagine Education's Certificate III in Commercial Cookery, you will spend 40-weeks of quality practical training in our state-of-the-art commercial kitchens on the Gold Coast and in Brisbane. This will be complimented with in-depth theory work delivered by our highly-qualified and dedicated trainers. You will complete 48 service periods in a commercial kitchen and master a variety of food and preparation techniques, opening up a world of opportunity to start your career in commercial cookery.

Once you have graduated, you may wish to further your study by moving on to a higher qualification, or take the skills you have learnt and start your dream career!

## ENTRY REQUIREMENTS

Students need to be 15 years old and are required to have reading, writing and comprehension skills equivalent to Year 10 pass level to successfully complete the Certificate level courses.

Overseas students English Proficiency Level will be tested prior to the commencement of Vocational Education and Training Courses. Imagine Education Australia requires an IELTS 5.5 with no band less than 5, or equivalent (as determined by Imagine Education Australia).

Should you feel you may not possess these literacy skills or have not completed a formal leaving certificate please contact us to discuss support arrangements.

## TIMETABLE

	STAGE 1 - FIRST 5 UNITS		STAGE 2- REMAINDER OF COURSE	
	TUTORIAL DAY	PRACTICAL DAY	TUTORIAL DAY	PRACTICAL DAY
<b>ASHMORE CAMPUS</b>	Monday 8:30am - 4:30pm	Friday 8:30am - 4:30pm	Wednesday / Thursday 8:30am - 4:30pm	Day to be determined by your trainer; Monday - Thursday 8:00am - 4:00pm
<b>BENOWA CAMPUS</b>	Monday 8:30am - 4:30pm	Tuesday 7:00am - 3:00pm	Wednesday 8:30am - 4:30pm	Thursday 7:00am - 3:00pm
<b>BRISBANE CAMPUS</b>	Friday 8:30am - 4:30pm	Monday 8:00am - 3:30pm	Monday 8:30am - 4:30pm	Day to be determined by your trainer; Tuesday - Friday 8:00am-3:30pm

\* Please note, course timetables are subject to change, and attendance is recorded

# SIT40516 CERTIFICATE IV IN COMMERCIAL COOKERY



**COURSE CODE:** SIT40516  
**CRICOS CODE:** 091750G  
**COURSE LENGTH:** 25 weeks  
**CAREER OUTCOMES:** This qualification provides a pathway to work in organisations such as restaurants, hotels, clubs, pubs, cafes and coffee shops, or to run a small business in these sectors. Possible job titles include: chef, chef de partie.  
**PRE-REQUISITES:** Certificate III in Commercial Cookery  
**CAMPUS:** Ashmore Campus, Brisbane Campus, Woolloongabba

## OVERVIEW

Study Imagine Education's Certificate IV in Commercial Cookery and complete 25-weeks of quality practical and theory training at our state-of-the-art kitchens and campuses on the Gold Coast and in Brisbane. This includes 12 service periods in a commercial kitchen where you will gain the skills to work as a chef or chef de partie.

This qualification teaches you how to work in a supervisory or team leading role in the kitchen. You will learn to work independently or with limited guidance, and solve non-routine problems.

It is strongly recommended that you undertake lower level qualifications, and/or gain industry experience prior to entering this qualification.

## ENTRY REQUIREMENTS

Students need to be 15 years old and are required to have reading, writing and comprehension skills equivalent to Year 10 pass level to successfully complete the Certificate level courses.

Overseas students English Proficiency Level will be tested prior to the commencement of Vocational Education and Training Courses. Imagine Education Australia requires an IELTS 5.5 with no band less than 5, or equivalent (as determined by Imagine Education Australia).

Should you feel you may not possess these literacy skills or have not completed a formal leaving certificate please contact us to discuss support arrangements.

## TIMETABLE

	TUTORIAL DAY	PRACTICAL	DISTANCE EDUCATION
<b>GOLD COAST</b>	Thursday or Friday 8:30am - 4:30pm	See your trainer - logbook can be signed off at your workplace 8:30am - 4:30pm	5 hours per week
<b>BRISBANE</b>	Thursday 8:30am - 4:30pm	See your trainer - logbook can be signed off at your workplace 8:30am - 4:30pm	5 hours per week

\* Please note, course timetables are subject to change, and all attendance is recorded.

# SIT50416 DIPLOMA OF HOSPITALITY MANAGEMENT (COMMERCIAL COOKERY)(UPGRADE)



**COURSE CODE:** SIT50416  
**CRICOS CODE:** 091019B  
**COURSE LENGTH:** 27 weeks  
**CAREER OUTCOMES:** Cafe manager, chef de cuisine, kitchen manager, restaurant manager, sous chef, unit manager (catering operations)  
**ARTICULATION PATHWAY:** Advanced Diploma of Hospitality Management  
**CAMPUS:** Ashmore Campus, Brisbane Campus, Woolloongabba

## OVERVIEW

Do you love to lead others and also love working in the hospitality industry? Study your Diploma of Hospitality Management (Commercial Cookery) and become qualified in this important field!

This course offers you the quality training needed to launch a career as a supervisor within various hospitality enterprises.

Your training will allow you to work in settings including restaurants, hotels, clubs, pubs, cafes, cafeterias and coffee shops. Individuals learn to operate independently, have responsibility for others, and make a range of operational business decisions.

Once you are qualified you open yourself up to a world of possibilities in this in-demand field!

## ENTRY REQUIREMENTS

Students need to be 15 years old and are required to have reading, writing and comprehension skills equivalent to Year 10 pass level to successfully complete the Certificate level courses.

Overseas students English Proficiency Level will be tested prior to the commencement of Vocational Education and Training Courses. Imagine Education Australia requires an IELTS 5.5 with no band less than 5, or equivalent (as determined by Imagine Education Australia).

Should you feel you may not possess these literacy skills or have not completed a formal leaving certificate please contact us to discuss support arrangements.

## TIMETABLE

	TUTORIAL DAY	RESEARCH DAY	DISTANCE EDUCATION
<b>GOLD COAST</b>	Tuesday 8:30am - 4:30pm	Thursday 8:30am - 4:30pm	5 hours per week
<b>BRISBANE</b>	Tuesday 8:30am - 4:30pm	Wednesday 8:30am - 4:30pm	5 hours per week

\* Please note, course timetables are subject to change, and all attendance is recorded.

# SIT50416 DIPLOMA OF HOSPITALITY MANAGEMENT



**COURSE CODE:** SIT50416  
**CRICOS CODE:** 091019B  
**COURSE LENGTH:** 56 weeks  
**CAREER OUTCOMES:** Restaurant manager; hotel manager; banquet or function manager; chef de cuisine; chef patissier; executive housekeeper; front office manager; kitchen manager; motel manager; sous chef; unit manager (catering operations)  
**CAMPUS:** Ashmore Campus

## OVERVIEW

Up-skill yourself and stand out from the rest by choosing to study your Diploma of Hospitality Management with Imagine Education.

Over 56-weeks you will receive in-depth theory and practical training from our dedicated hospitality trainers. With 36 service periods in a hospitality environment, you will gain valuable practical experience. You will gain the skills and knowledge to be a competent supervisor within various hospitality enterprises. Students who successfully complete this course will have the skills to operate independently, have responsibility for others, and make a range of operational business decisions.

Once you complete your course you may wish to continue your training by choosing our Advanced Diploma of Hospitality Management or you may choose to begin a career in this in-demand field!

## ENTRY REQUIREMENTS

Students need to be 15 years old and are required to have reading, writing and comprehension skills equivalent to Year 10 pass level to successfully complete the Certificate level courses.

Overseas students English Proficiency Level will be tested prior to the commencement of Vocational Education and Training Courses. Imagine Education Australia requires an IELTS 5.5 with no band less than 5, or equivalent (as determined by Imagine Education Australia).

Should you feel you may not possess these literacy skills or have not completed a formal leaving certificate please contact us to discuss support arrangements.

## TIMETABLE

### TUTORIAL DAY

Monday  
8:30am - 4:30pm

### RESEARCH DAY

Tuesday  
8:30am - 4:30pm

### DISTANCE EDUCATION

5 hours  
per week

\* Please note, course timetables are subject to change, and all attendance is recorded.



# SIT60316 ADVANCED DIPLOMA OF HOSPITALITY MANAGEMENT



**COURSE CODE:** SIT60316  
**CRICOS CODE:** 091106C  
**COURSE LENGTH:** 51 weeks  
**CAREER OUTCOMES:** Food and beverage manager; operations manager; cafe owner or manager; motel owner or manager; head chef; human resources coordinator; sales and marketing coordinator  
**CAMPUS:** Ashmore Campus

## OVERVIEW

A career in hospitality is a rewarding one, and by choosing to study Imagine Education's Advanced Diploma of Hospitality Management you are giving yourself a real edge in your future career. Based at our modern Ashmore Campus, you will complete 56-weeks of quality practical and theory training, inclusive of 36 service periods in a hospitality environment.

With this qualification you will learn to operate at a senior level using substantial industry knowledge and specialised managerial skills across the hospitality industry. You will be able to work independently, take responsibility for others, and make a range of strategic business decisions.

After you graduate you will be qualified to work in a number of senior positions including: food and beverage manager, operations manager, and café manager and much more!

## ENTRY REQUIREMENTS

Students need to be 15 years old and are required to have reading, writing and comprehension skills equivalent to Year 10 pass level to successfully complete the Certificate level courses.

Overseas students English Proficiency Level will be tested prior to the commencement of Vocational Education and Training Courses. Imagine Education Australia requires an IELTS 5.5 with no band less than 5, or equivalent (as determined by Imagine Education Australia).

Should you feel you may not possess these literacy skills or have not completed a formal leaving certificate please contact us to discuss support arrangements.

## TIMETABLE

### TUTORIAL DAY

Wednesday  
8:30am - 4:30pm

### RESEARCH DAY

Day to be determined by your trainer;  
Monday, Tuesday, Thursday or Friday  
8:30am - 4:30pm

### DISTANCE EDUCATION

5 hours  
per week

\* Please note, course timetables are subject to change, and all attendance is recorded.

# CONTACT US



## EMAIL

info@imagineeducation.com.au

## MAIN CAMPUS

+617 5552 0900  
13 Benowa Road  
Southport QLD 4215

## SOUTHPORT CENTRAL CAMPUS

+617 5571 1122  
Building 3F, 9 Lawson Street  
Southport QLD 4215

## ASHMORE CAMPUS

+617 5586 2244  
151 Currumburra Road  
Ashmore QLD 4214

## OUR COURSES

### ENGLISH COURSES

056501E General English; 1 – 60 weeks  
056499E IELTS Preparation; 1 – 12 weeks

### AUTOMOTIVE COURSES

AUR30620 Certificate III in Light Vehicle Mechanical Technology; 60 weeks  
AUR40216 Certificate IV in Automotive Mechanical Diagnosis; 36 weeks  
AUR50116 Diploma of Automotive Management; 30 weeks

### CHILDREN'S SERVICES COURSES

CHC30121 Certificate III in Early Childhood Education and Care; 46 weeks  
CHC50121 Diploma of Early Childhood Education and Care; 50 weeks

### COMMUNITY SERVICES COURSES

CHC33015 Certificate III in Individual Support (Ageing); 27 weeks  
CHC43015 Certificate IV in Ageing Support; 39 weeks  
CHC43015 Certificate IV in Ageing Support (upgrade); 39 weeks

Cricos Provider No. 02695C  
National Provider No. 31302  
Imagine Education Australia Pty Ltd  
Investing in imaginations

The information in this course guide was correct at time of printing (December 2021).

## WEBSITE

www.imagineeducation.com.au

## BRISBANE CAMPUS

+617 5521 0595  
Level 2, 170 Leichhardt Street  
Spring Hill QLD 4000

## WOOLLOONGABBA CAMPUS

12 Annerley Road  
Woolloongabba QLD 4102

## BRISBANE AUTOMOTIVE WORKSHOP

163 Abbotsford Road  
Bowen Hill QLD 4006

### HOSPITALITY COURSES

SIT30816 Certificate III in Commercial Cookery; 40 weeks  
SIT40516 Certificate IV in Commercial Cookery; 25 weeks  
SIT50416 Diploma of Hospitality Management; 56 weeks  
SIT50416 Diploma of Hospitality Management (Commercial Cookery) (upgrade); 27 weeks  
SIT60316 Advanced Diploma of Hospitality Management; 51 weeks

### BUSINESS COURSES

BSB30120 Certificate III in Business; 22 weeks  
BSB40120 Certificate IV in Business; 35 weeks  
BSB40820 Certificate IV in Marketing and Communication; 32 weeks  
BSB50120 Diploma of Business; 35 weeks  
BSB50420 Diploma of Leadership and Management; 36 weeks  
BSB50620 Diploma of Marketing and Communication; 32 weeks  
BSB60420 Advanced Diploma of Leadership and Management; 32 weeks  
BSB60520 Advanced Diploma of Marketing and Communication; 32 weeks

### IMAGINE EDUCATION AUSTRALIA

p. +617 5552 0900  
w. www.imagineeducation.com.au  
f. Imagine Education  
insta. imagine\_education\_au